



HELP SIGHT AFRICA PROJECT



PROJECT FOR THE REALIZATION OF EYE SURGERY WITH ATTACHED OPTICAL LABORATORY AT THE "CHRIST THE KING HOSPITAL" IN WATERLOO FREETOWN – SIERRA LEONE

PREMISE

The World Health Organization has estimated that the view of about a quarter of the world's population (men, women and children) can be improved through the use of corrective lenses, and that in developing countries 44% of the population needs Glasses but do not possess them, not being able to afford an eye examination and the luxury of buying them.

In these countries, an eye exam can cost as much as the salary of one month, and one doctor is often at the service of a community of hundreds of thousands of people. To think that in the United States there is an ophthalmologist every 4,500 people, while in Africa there is one every million people.

A bad or neglected eyesight operation can force adults to unemployment and children out of school classes.

THE MOBILE EYE TEAM OF MANIVERSO

Created in 2010 with the following objectives:

- Perform, possibly annually, in the course of ten days, a visual screening of a poor and densely populated suburban area in an African country;
- Detect any visual defect and deliver for free, a suitable eyewear for correction;
- Check for ocular pathologies and distribute the necessary medicines;
- Encouraging the strengthening of the existing health infrastructure and the renewal and adaptation of the technological equipment in the field of ophthalmology;

they are composed of eye doctors, eye paramedics, nursing staff, eyewear technicians, logists, for a total on average of 20 people all volunteers.

The missions already carried out:

- 2010 SENEGAL: Centre Amdou Malik Gaye – Dakar;
- 2011 TOGO: Centre Medico Social St. Josephine Bakhita – Lomé;
- 2012 – 2013 BURUNDI: Maison des enfants Agatutu K ' Abana – Kamenge;
- 2014 ZIMBABWE: Luisa Guidotti Hospital-Mutoko, St. Paul Musai Hospital – Murewa;
- 2015 UGANDA: Christus Centre Arua.

In Total, 13,135 people were visited and 12,250 glasses of various types were delivered; In 2016 and 2017 (September) while not having carried out missions 6,106 glasses were sent in Burundi, Cameroon, Congo, Cape Verde, Vietnam, Burkina Faso, Togo, Kenya, Uganda, Mexico and Senegal.

In the 2015 and 2016 similar missions were also carried out in Italy for the benefit of the deprived people, homeless and migrants in collaboration with the local Caritas.

The glasses used collected by the association, are regenerated by its volunteers in the laboratory specially equipped with Sedico (BL).

MANIVERSO EYE CLINICS

In parallel with the eye screening missions the association began to equip at existing medical facilities of eye surgeries providing all the necessary medical equipment (slit lamp, auto refractometer, Tonometer, Cassette test lenses etc.); The clinics were flanked by optical laboratories for the on-site assembling of new eyewear.

The association also conducts training courses for local technical personnel on site.

The currently operational surgeries are two, both in Burundi, at Buyengero at the "Medical Center of the Martyrs of Buyengero" and at Kamenge at the "Maisons des enfants".

SIERRA LEONE

Sierra Leone has the enviable primacy of being the last place in the UNDP (United Nations Development Programme) list according to the Human Development index. According to UNICEF data, Sierra Leone is the first country in the world for infant mortality under the age of 5, with 262 deaths on 1,000 before the fifth year of life, and for maternal mortality, with 2,100 expectant mothers on 100,000 who die for complications that arose during pregnancy. The living conditions of the majority of the Sierra Leone population are dramatic: according to the most recent studies of the World Food Programme (WFP), 52% of the population lives with less than \$1 per day, while 1 Kg of rice costs \$0.82.

In Sierra Leone, all health benefits from the most ordinary medical examination, to malaria exams, to hospital treatments are paid for and often have unsustainable costs for families.

The association is present in Sierra Leone since 2005 supporting various projects in the field of health, education, welfare, microcredit of the Missionaries Friends Association NGO of Freetown.

In 2008 – 2009 the association supported financially and through the sending of medicines and eyeglasses the project "Glaucoma" whose purpose was the prevention of childhood blindness through free interventions of surgical and medical assistance. 7,413 children were visited of whom 1,409 received medical assistance.

THE "CHRIST THE KING HOSPITAL"

Waterloo Camp, now Kissy Town, is one of the largest slums in Freetown, the capital of Sierra Leone; it has hosted over the years up to 80,000 and more people. It now houses about 20,000; poor, unemployed, sick, amputated, blind. A field where human suffering is evident, tangible: mud houses, plastic or straw roofs, curtains like doors and nothing on the windows, out of three stones for cooking and so many children, barefoot, undressed or naked, often sick and hungry. Ebola erupted here.

And it is here that in June 2015 began the construction work of "Christ the King Hospital", completed in January 2017, the only hospital to lend free health benefits to the population of Kissy Town.

GENERAL OBJECTIVES OF THE PROJECT

At the "Christ the King Hospital", in a new building specially constructed, an eye clinic with an attached optical laboratory will be prepared to:

- ensure free visual screening;
- detect any visual defect and deliver a suitable eyewear for correction;
- check for ocular pathologies;
- pay special attention to school-age children, including eye visits to schools.

THE EYE CLINIC

It will be equipped with the following equipment:

- n ° 1 ophthalmic unit with armchair complete with:
 - manual phoropter;
 - slit lamp;
 - test cassette lenses complete with test glasses;
- n ° 1 autorefractometro;
- n ° 1 tonometer to the planting;
- n ° 1 ophthalmoscope;
- some optotypes of albinos and 1 optotype for reading;
- material for Schiascopia;
- metal cabinets, stools and tables.

The clinics will also have a mobile slit lamp, complete with current generator, to make external eye visits, particularly in schools, for the prevention of onchocerciasis (also known as river blindness).

THE OPTICAL LABORATORY

Equipped with:

- n ° 1 wheel size lens;
- n ° 1 fronts focometer;
- stock glasses reconditioned various types;
- new frames warehouse;
- virgin Lens stock various gradations and typologies;
- glasses sterilizer;
- metal cabinets, metal shelving, tables and chairs.

FORESTERIA

In the same building will be prepared a guesthouse to accommodate volunteers on mission; will be formed by:

- n° 3 double bedrooms with their own bathroom;
- kitchen;
- dinning room;
- palour;
- veranda.

The Association will provide all necessary furnishings.

THE COMMITMENT OF MANIVERSO ONLUS

The Association undertakes, for the period deemed necessary for self-sufficiency, to:

- provide all necessary equipment;
- Arrange for its dispatch and on-site installation;
- Ensure their maintenance through periodic missions of their volunteer technicians;
- Reintegrate the stock of reconditioned glasses, new frames and lenses.

It also undertakes to organize, for a minimum period of two years, periodical missions of its own volunteers, opticians and technicians of eyeglasses to support and training of local staff.

The association will also provide computer support in order to allow "telemedicine" with medical personnel in Italy.

THE COMMITMENT OF THE LOCAL PARTNER "MISSIONARIES' FRIENDS ASSOCIATION N.G.O."

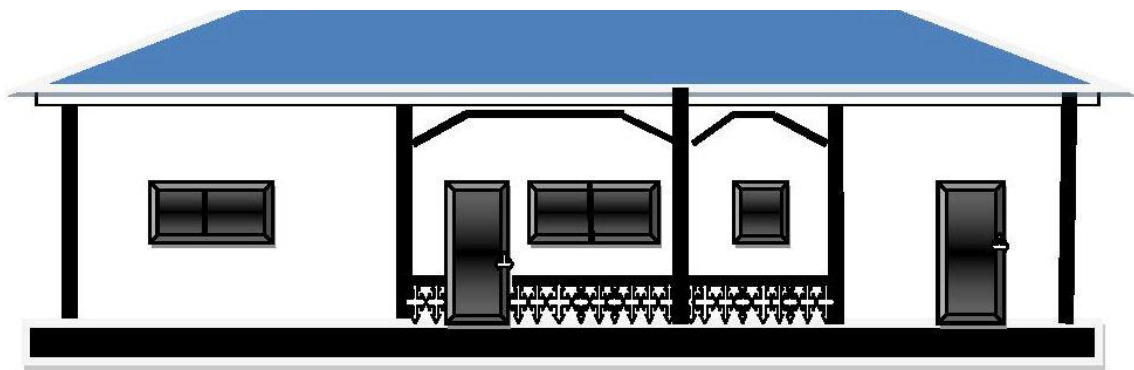
The Association shall:

- Arrange for all necessary authorizations;
- Search for local staff to support the volunteers of Maniverso;
- Guarantee food and accommodation to Maniverso volunteers.

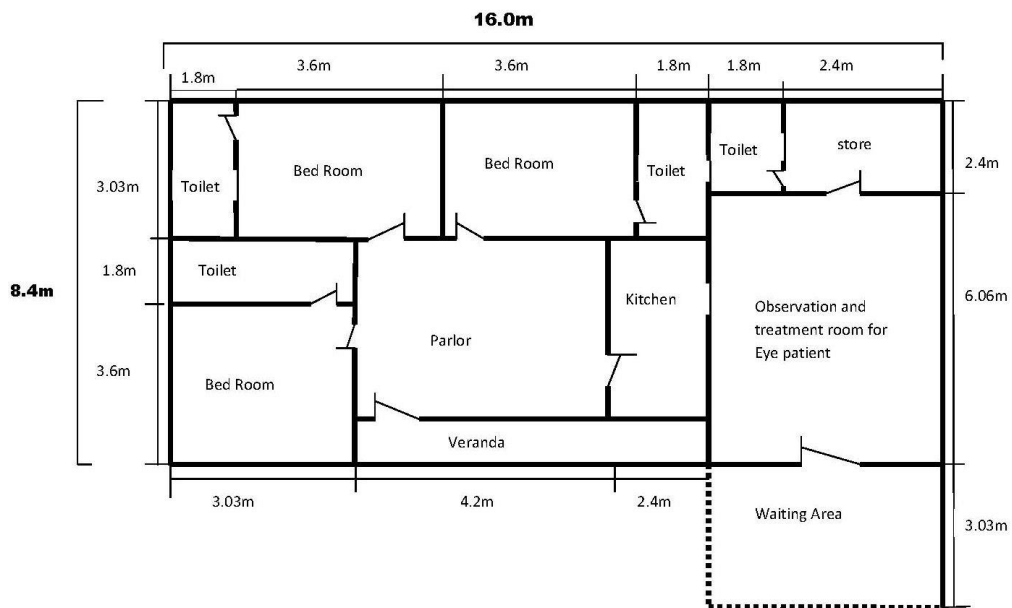
ECONOMIC COMMITMENT

The economic commitment of a two-year project:

• new building	€ 30.000,00.=
• equipments, furnishing foresteria spare parts etc.	€ 20.000,00.=
• missions for assembly and maintenance equipment	€ 7.000,00.=
• Ophthalmology team missions	€ 30.000,00.=
• Economic support to local staff	€ 13.000,00.=
TOTAL	€ 100.000,00.=



FRONT VIEW



FLOOR PLAN